



▼ DESIGN FEATURE

The EMEB-OSW Valve is a double-acting 90-degree rotary pneumatic actuated plastic butterfly valve, featuring a durable aluminum alloy shell and UPVC body for reliable performance. It supports a size range of DN40 to DN300 with an operating pressure of PN1.0MPa (150PSI) and an output torque of up to 1170Nm, ensuring robust functionality. Suitable for controlling water, air, gas, oil, and liquid in the food industry and chemical solvents compatible with PVC, it operates efficiently within a media temperature range of -10°C to +80°C. The valve's midline structure, NBR/EPDM sealing, and wafer/flange end connection options enhance versatility. With a lifespan of 1 million cycles and compliance to GB, DIN, ANSI, ASME, JIS, API standards, it guarantees durability and precision.

Pneumatic rotary actuator: EMP Series pneumatic rotary actuator is explosion-proof and designed for ball/butterfly valves, offering an output torque range of 14 to 1170Nm and a rotation angle of $90^\circ \pm 4^\circ$. Made from durable aluminum alloy, it operates efficiently with filtered, dry compressed air and suits industries like food, petrochemical, pharmaceutical, and marine. Certified with CE, ensuring compliance with EU safety standards and providing market access advantages.

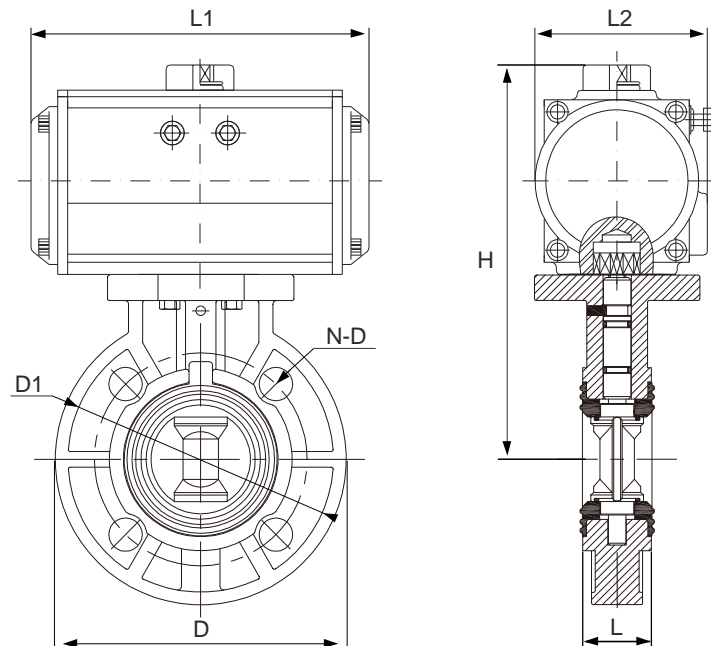
▼ SPECIFICATIONS

Model	EMPB-OPW
Nominal inner diameter	DN40~DN300
Pressure	1.0Mpa
Temperature	-20°C~80°C
Compressed Air Pressure	3 – 8 bar
Body material	UPVC
Seal material	EPDM, NBR
Disc material	UPVC
Actuator style	On/Off
Connection	Wafer type

▼ ATTACHMENT SELECTION

Solenoid valve	3/2, 5/2, single electric control and double electric control
Filter pressure reducing valve	Stabilize and filter air source pressure
Limit switch	Remote feedback switch signal
Manual device	Manual device can open and close valve manually
Positioner	Input analog signal (4-20mA or 0-10V), Adjust valve travel

▼ DESIGN FEATURE



▼ PNEUMATIC OVERALL DIMENSIONS CHART-PN10 (10BAR)

Model	DN	Overall Dimension				Connection Size 1.0		
		L	L1	L2	H	D	D1	N-D
EMPB-OPW-40	40	39	159	83	183	47	110	4-Φ18
EMPB-OPW-50	50	45	159	83	196	56	125	4-Φ18
EMPB-OPW-65	65	48	159	83	208	71	145	4-Φ18
EMPB-OPW-80	80	48	211	95	225	85	160	8-Φ18
EMPB-OPW-100	100	58	248	107	256	105	180	8-Φ18
EMPB-OPW-125	125	70	269	123	317	131	210	8-Φ18
EMPB-OPW-150	150	76	315	141	351	153	240	8-Φ22
EMPB-OPW-200	200	92	345	152	427	204	290	8-Φ22
EMPB-OPW-250	250	114	409	172	500	255	350	12-Φ22
EMPB-OPW-300	300	120	438	187	555	307	400	12-Φ22

- Note: According to different valve torque, different air supply pressure and different actual working conditions, select the matched actuator, and its relevant dimensions change accordingly.